

Bumps in the Bay

Newly discovered seafloor structures in Weymouth Bay

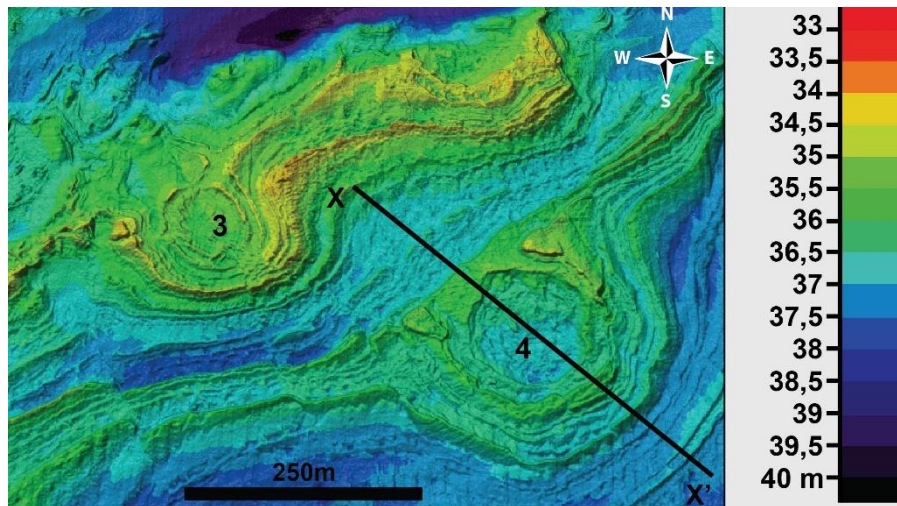


The Etches Collection Museum of Jurassic Marine Life, Kimmeridge

Sunday 23rd September 2018 2.30pm

Speaker: Dan Bosence, Emeritus Professor Geology,

Royal Holloway University of London



With welcome and introduction about the DORIS project by

Peter Tinsley, Dorset Wildlife Trust

The remarkable seafloor images of Weymouth Bay obtained by Dorset Wildlife Trust's DORIS project provide new insights into the geology of the Jurassic Coast. Large circular structures revealed in the Purbeck Limestone have not previously been seen in any of the coastal cliffs or quarries from Durlston Bay to Portland, despite over a hundred years of geological research. Many geological processes can generate circular arrangements of strata from meteorite impacts to collapsed caves, volcanoes, reefs or to salt injection structures. The talk will describe the structures as revealed in echo sounding images, explore the different interpretations and the implications for our understanding of this classic geological area.

Entry by donation on the door

To reserve your seat contact Julie Hatcher 01929 481044
kimmeridge@dorsetwildlifetrust.org.uk



Part of a
nationwide network
of Wildlife Trusts

Protecting **Wildlife** for the Future